



## BRIDGE Health Strategy Meeting, 20.4.2017

BRIDGE Health Strategy Meeting, 20.4.2017



## Background: General Discussion on Public Health in Germany

- Main questions:
  1. How to strengthen public health outcomes in Germany?
  - and
  2. How to strengthen and coordinate public health capacities ?





# Background: New demands for Public Health in Germany

Stellungnahme

## Public Health – mehr Gesundheit für alle

Ziele setzen – Strukturen schaffen – Gesundheit verbessern

Public Health: Setting Goals, Establishing Structures and Improving Health for All

**Autoren** N. Dragano<sup>1</sup>, A. Gerhardus<sup>2</sup>, B.-M. Kurth<sup>3</sup>, T. Kurth<sup>4</sup>, O. Razum<sup>5</sup>, A. Stang<sup>6</sup>, U. Teichert<sup>7</sup>, L. H. Wieler<sup>2</sup>, M. Wildner<sup>8</sup>, H. Zehe<sup>9</sup>

**Institute** Die Institutsangaben sind am Ende des Beitrags gelistet

596 Zur Diskussion

## Public und Global Health in Deutschland stärken – Eine Einordnung der Stellungnahme „Public Health in Deutschland“ der wissenschaftlichen Akademien vom 16.6.2015

Strengthening Public and Global Health in Germany – an Appraisal of the Statement “Public Health in Germany” by the German Scientific Academies from June 16th 2015

**Autoren** A. Gerhardus<sup>1,2</sup>, B. Blättner<sup>3</sup>, G. Bolte<sup>4,5</sup>, M.-L. Dierks<sup>6</sup>, C. Dockweiler<sup>7</sup>, G. Faller<sup>8</sup>, B. Gusy<sup>9</sup> (Vorstand der Deutschen Gesellschaft für Public Health)

**Institute** Die Institutsangaben sind am Ende des Beitrags gelistet

### Schlüsselwörter

- Public Health
- Deutschland
- Organisation
- Forschung
- Lehre
- Anwendung

### Key words

- public health
- Germany
- organization
- research
- teaching
- application

### Zusammenfassung

Der bevölkerungs- bzw. systembezogene Ansatz von Public Health ist ein kritisches Element für die nachhaltige Weiterentwicklung eines Gesundheitswesens und zur Verminderung gesundheitlicher Ungleichheiten. Er ist angesichts der globalen gesundheitlichen Herausforderungen unverzichtbar. Die Bedeutung von Public Health für die Gesundheit der Menschen wird in Deutschland jedoch institutionell nur unzureichend widerspiegelt. Dies gilt für Forschung und Lehre, den Öffentlichen Gesundheitsdienst und auch für Querschnittsbereiche, in denen Public Health nicht ausreichend repräsentiert ist. In der Vergangenheit gab es verschiedene Initiativen, um die historisch bedingten strukturellen Defizite in Deutschland aufzuarbeiten und die Rolle von Public Health zu stärken. Das hier vorgelegte White Paper soll eine Diskussion über

### Abstract

Public health is a population- and system-based approach that is needed to improve the health of societies and to decrease health inequalities. In the face of global challenges, the public health approach is essential. In Germany, the importance of public health is only partly reflected by its institutions and institutional arrangements. This applies equally to research, teaching and training, as well as to the public health service. Furthermore, the public health perspective is not sufficiently considered in cross-sectional topics that are relevant for health. There have been several initiatives to overcome structural deficits which can partly be traced back to historical circumstances. The White Paper presented here should encourage discussions about future policy options in public health. The authors represent public health in practice, rese-

## Where are we now?

Public Health in Germany is influenced  
by national and international developments

- Diseases and health challenges do not stop at national borders
- Health transitions are a major global public health challenge
- International cooperation is essential for effective national public health protection





## Where do we want to go?

The international dimension of national public health:

### Goals of RKI

- International involvement to shape a global Public Health
  - Strong partnerships with international institutes
  - Strengthen supranational Public Health structures
  - Promote an international approach to One Health
  
- Focused and sustainability cooperation with selected countries
  - Development of criteria for selecting countries as focal points to create synergies in international activities



EQATox





## Where do we want to go?

### The international dimension of national public health:

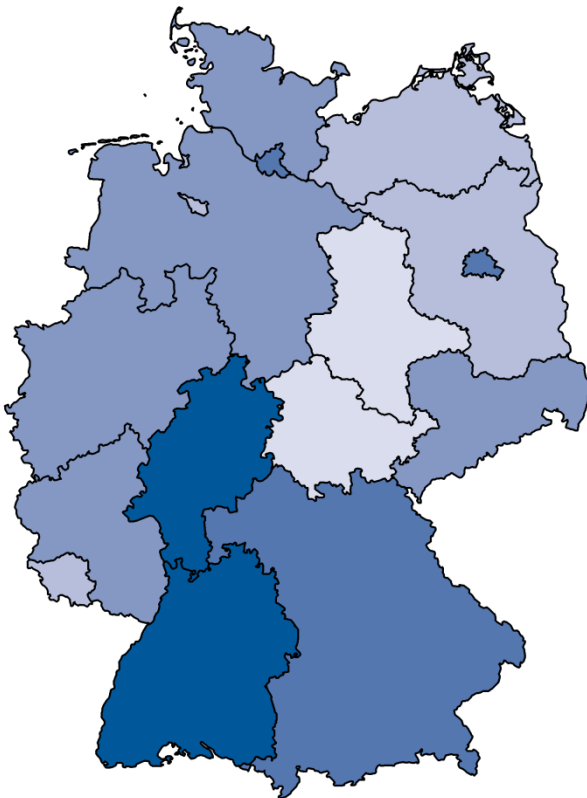
#### Goals of RKI

- Focused cooperation on important public health issues
  - Meet challenges of international dimension, like obesity
  - Improve surveillance
  - Identify interventions
  - Promote evidence-based public health
- Efficient generation and use of resources
  - Creating synergies through exchange
  - Cooperation with relevant stakeholders
  - Build up of health crisis reaction capacity

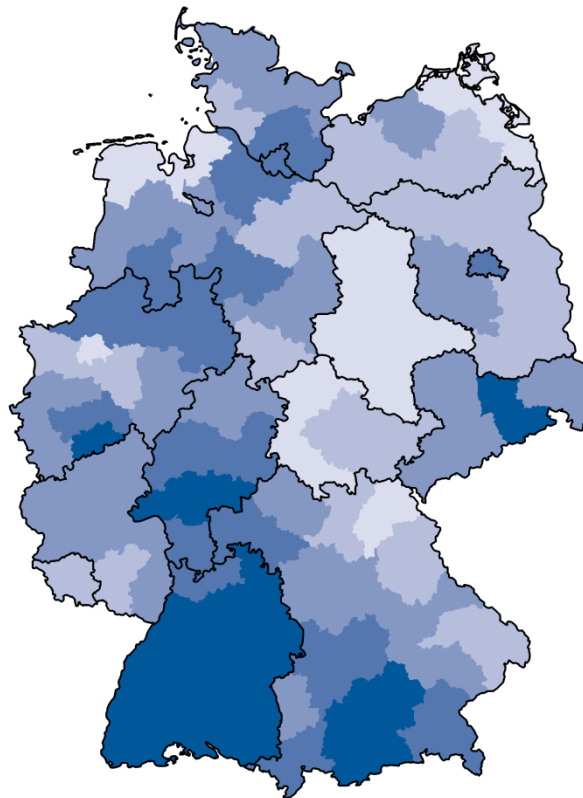


# Public health challenges: Life expectancy at birth in Germany – regional differences

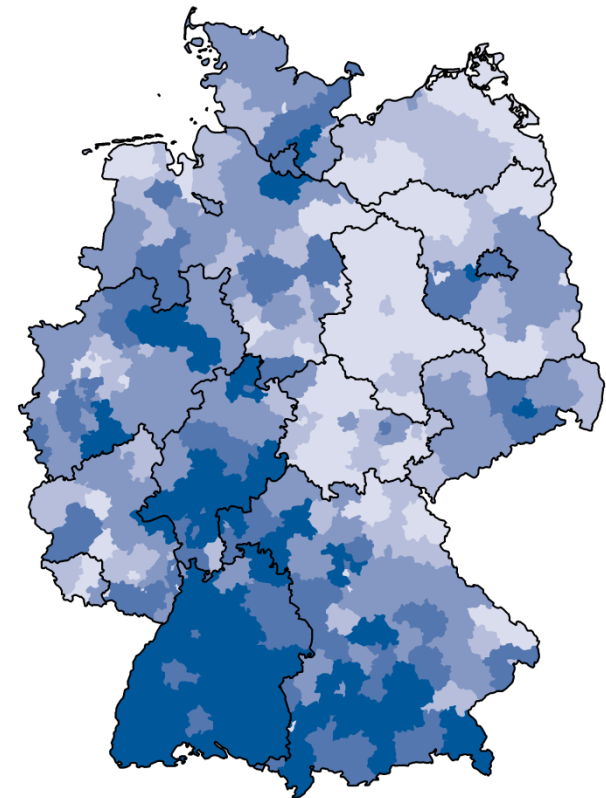
Federal states



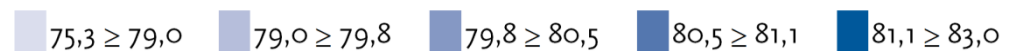
Regions



Districts



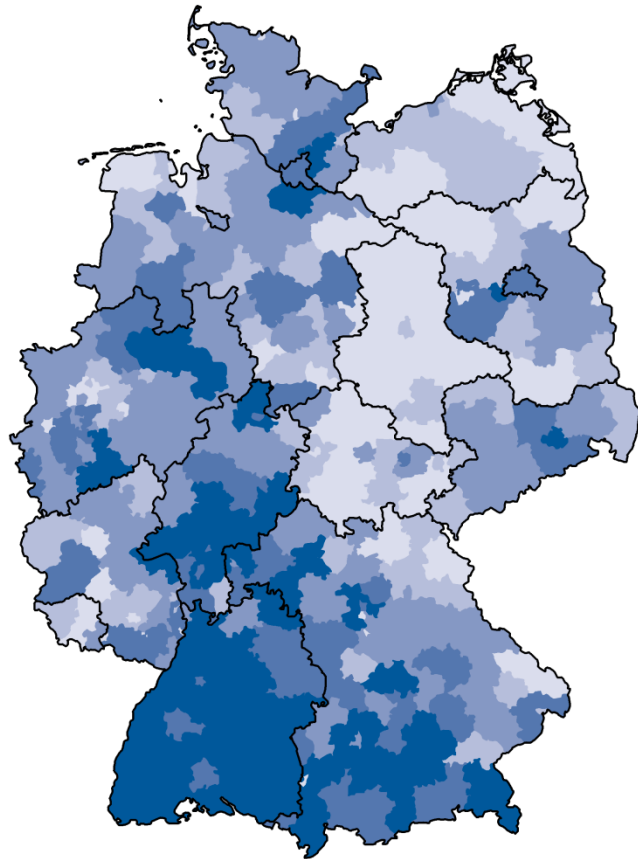
Data source: INKAR database 2013  
Federal Office for Building and Regional Planning





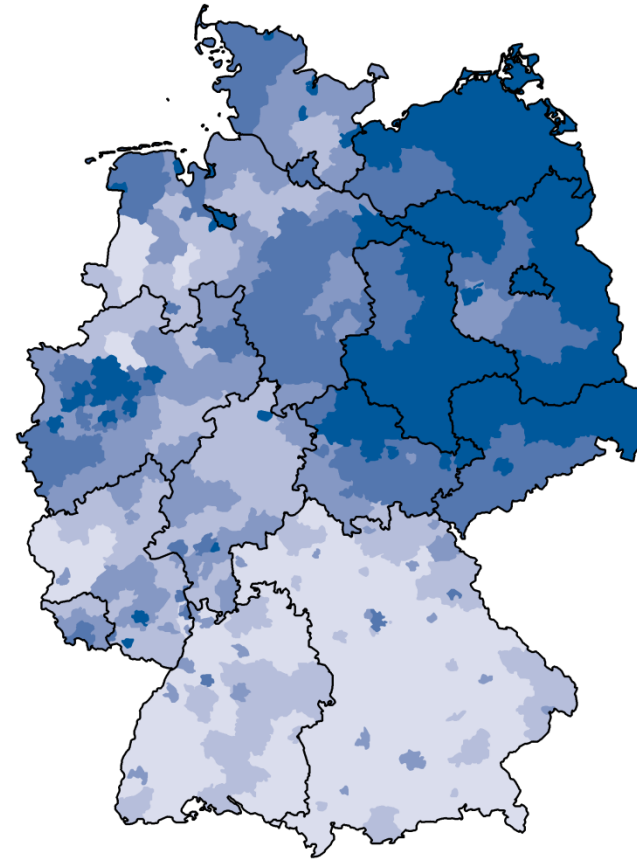
# Public health challenges: Life expectancy at birth, unemployment rate in Germany

## Life expectancy at birth (years)



75,3 ≥ 79,0   79,0 ≥ 79,8   79,8 ≥ 80,5   80,5 ≥ 81,1   81,1 ≥ 83,0

## Unemployment rate (%)



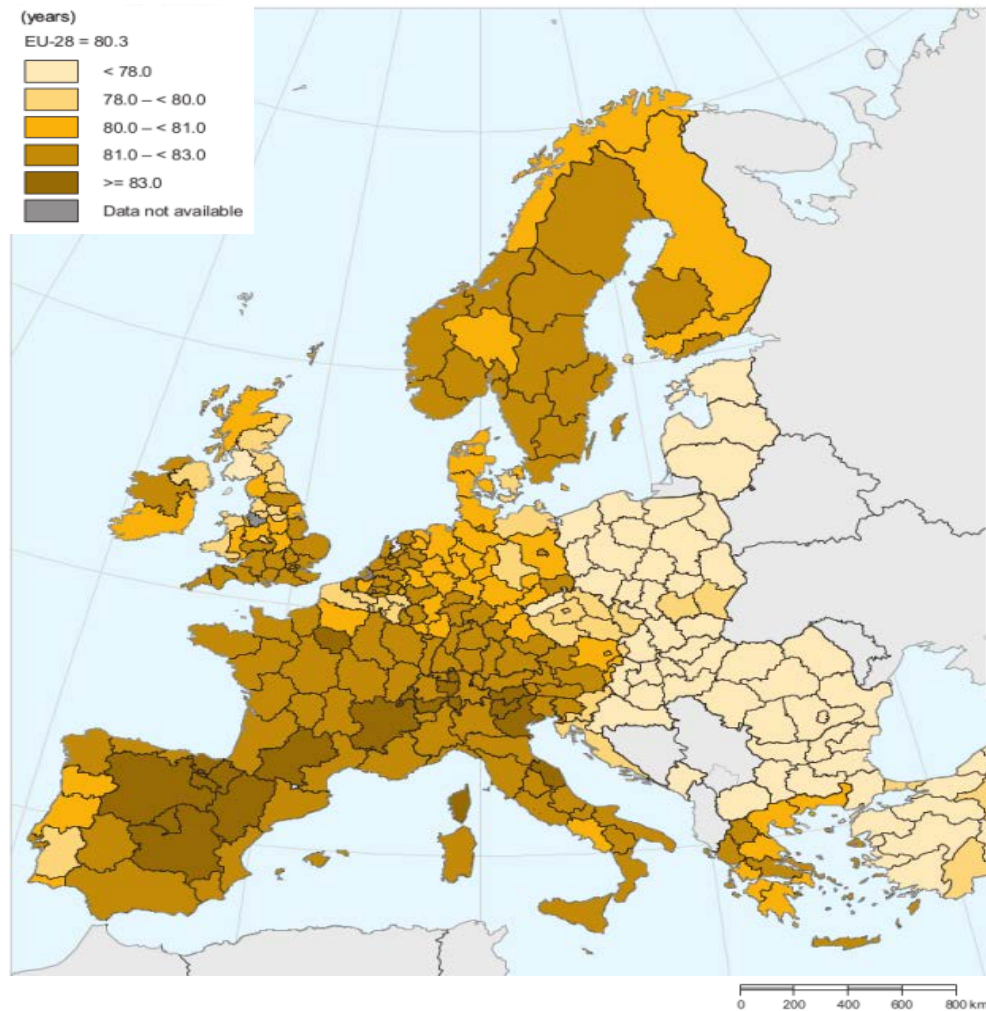
1,3 ≥ 3,8   3,8 ≥ 5,1   5,1 ≥ 7,0   7,0 ≥ 9,8   9,8 ≥ 16,6

Data source: INKAR database 2012

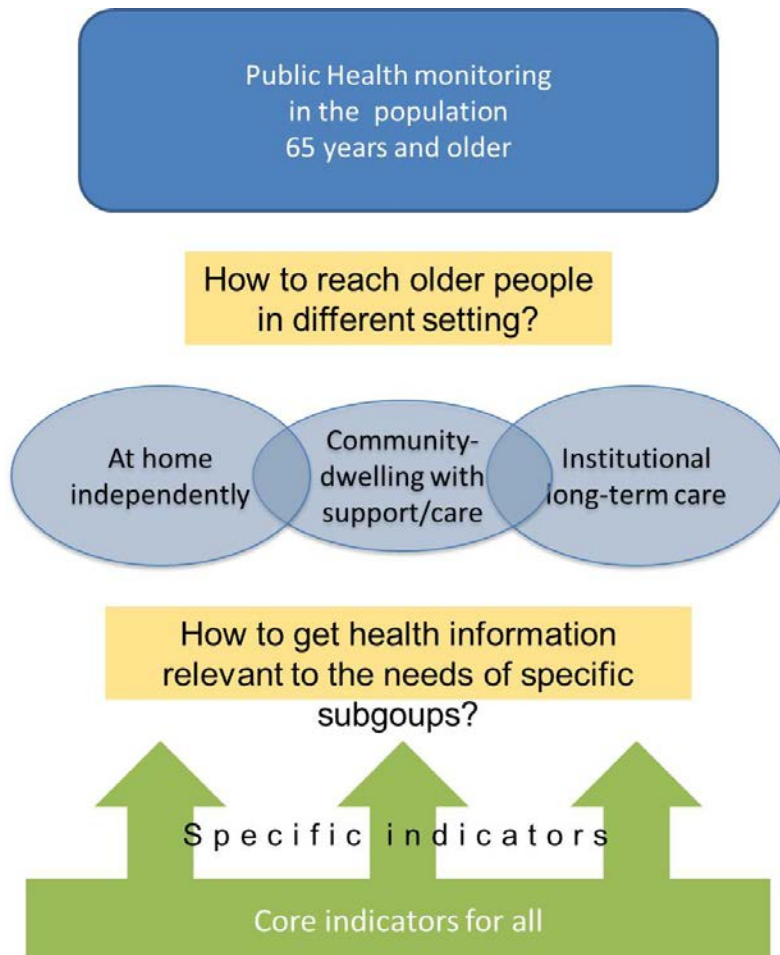
Federal Office for Building and Regional Planning



## Public health challenges: Life expectancy at birth, by NUTS 2 regions (2012)



# Public health challenge: Healthy Ageing



- Include high age groups into the health monitoring system (e. g. those living in long-term care institutions)
- Refine methods to improve health monitoring in older people
- Analyse changes in health needs across the life course

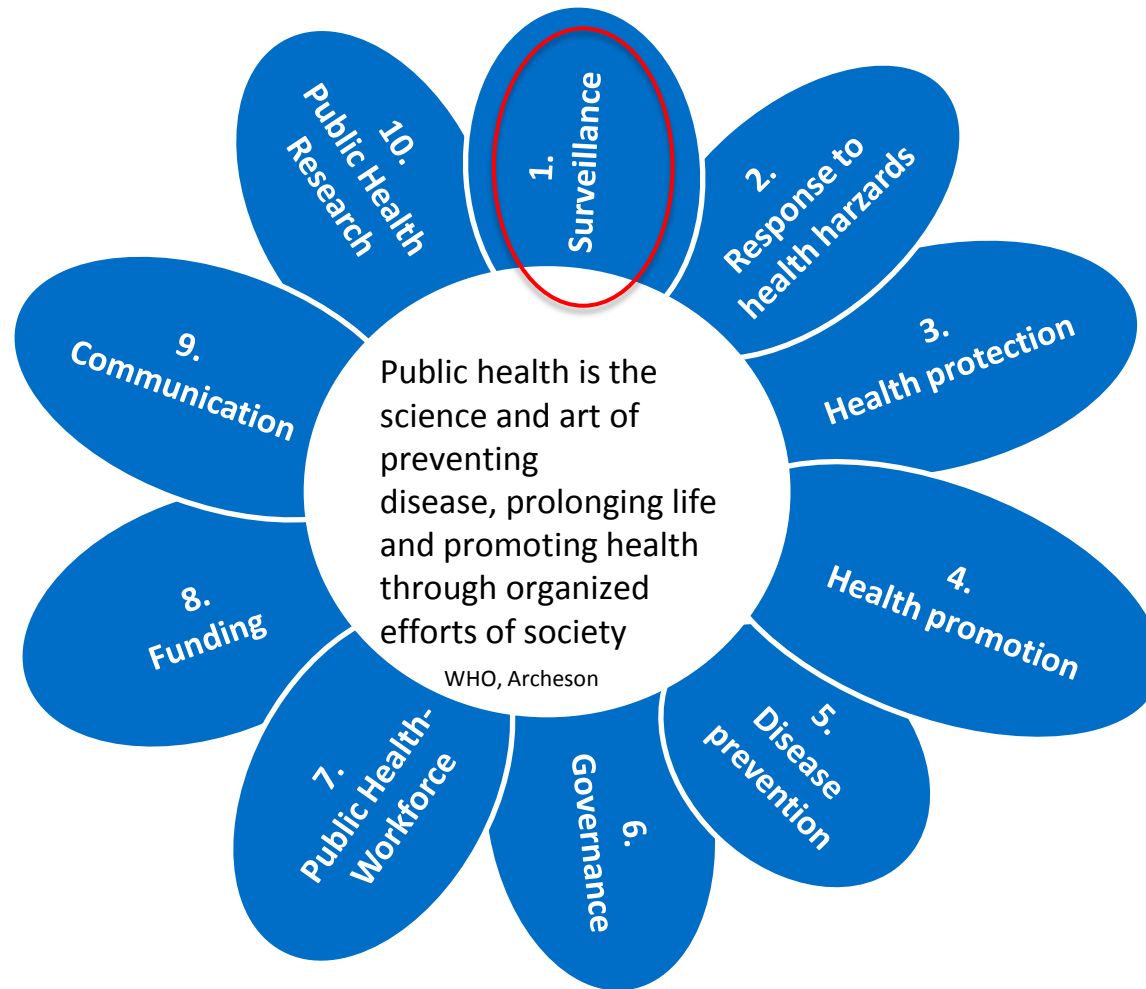
# Healthy Ageing: Where do we want to go?



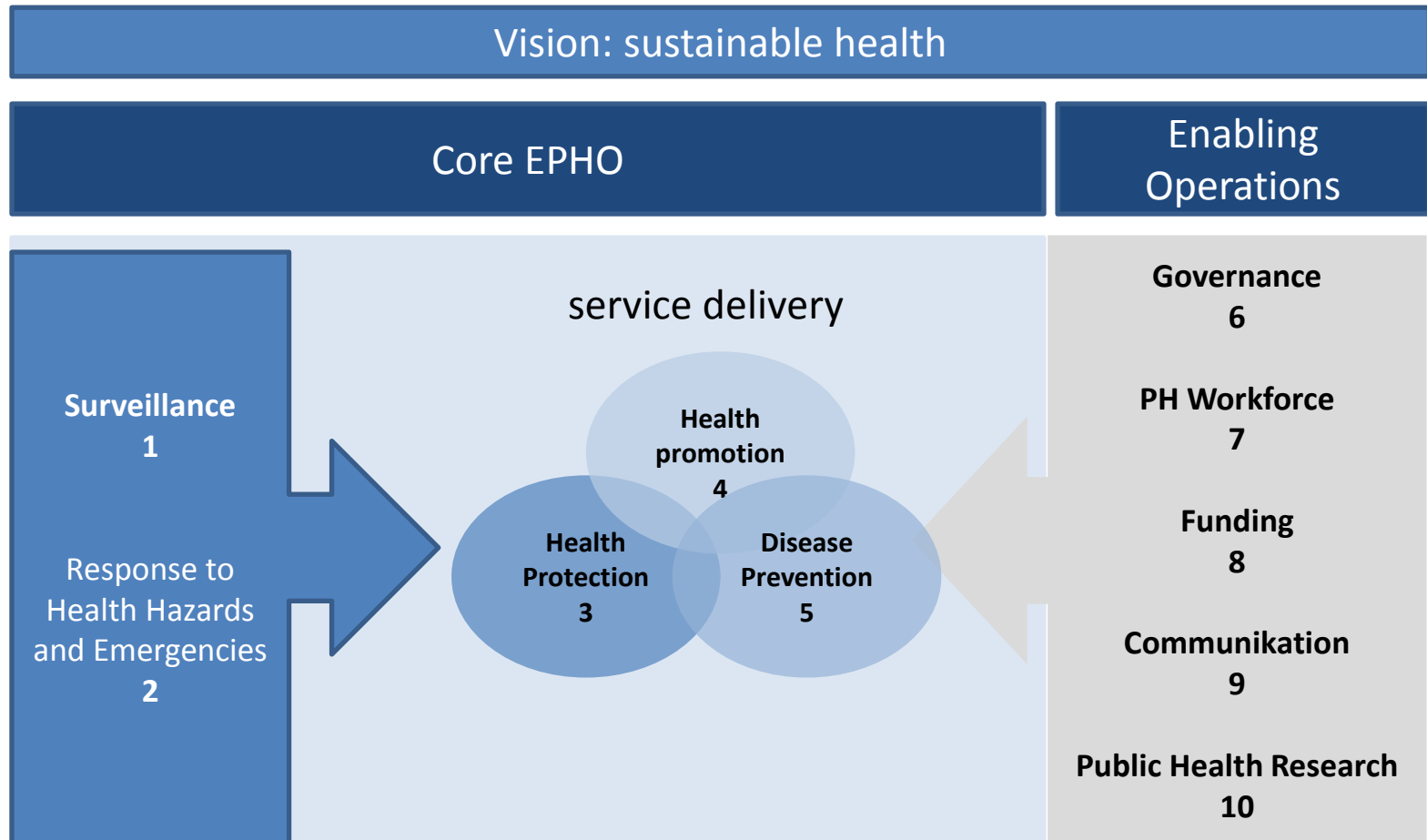
- Establish 'Healthy Ageing' as a cross-cutting Public Health issue
- Build a sustainable database for monitoring 'Healthy Ageing' and evaluate health policy effects at the population level
- Strengthen Public Health research exchange on 'Healthy Ageing' with Public Health institutes in Europe and abroad

<http://www.mailman.columbia.edu/sites/default/files/hmainfeature/lifespan.gif?1320679788>

# Dimensions of Public Health



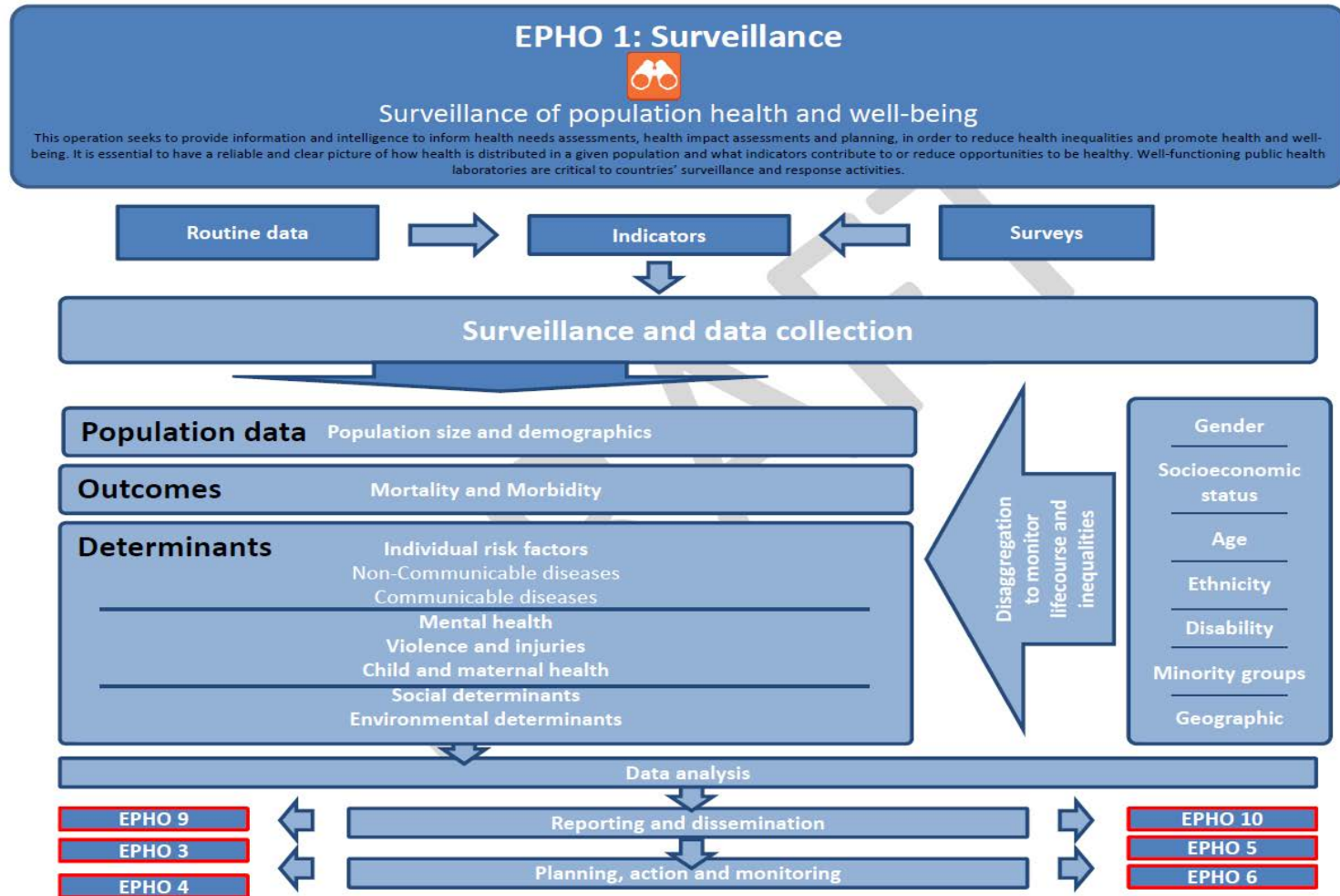
# Public Health Operations



original by WHO, adopted by RKI



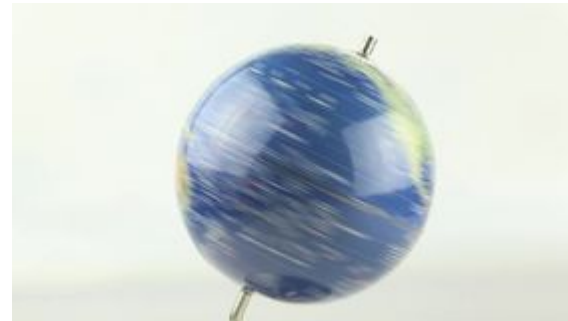
# Surveillance (EPHO 1)



## (New) challenges to Public Health – need for international co-operation

### Examples

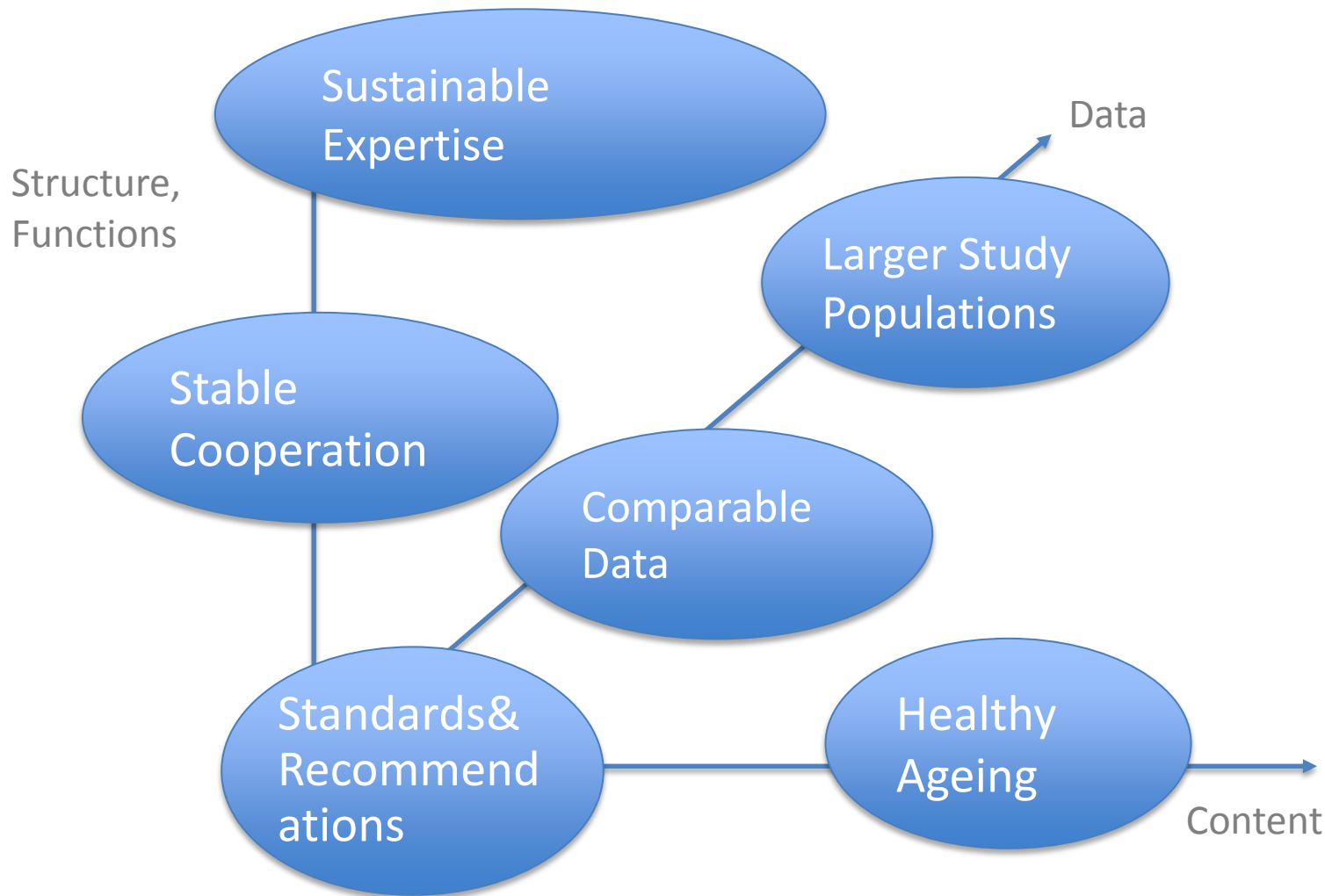
- Migration
- Globalisation
- Ageing Society
- Digitization/Big Data
- One Health
- Antimicrobial Resistance
- Climate Change
- Social inequality in health
- Re-emerging infections
- .....







## (New) challenges to Public Health – enhancing Public Health by a sustainable EU-infrastructure



**Thank you**