

Generate knowledge: The European Core Health Indicators

European Public Health Conference
Friday 3rd of November

Name: Angela Fehr¹ and Mariken Tijhuis²
Institution: RKI¹ and RIVM²
Country: Germany¹ and The Netherlands²
Email: fehra@rki.de
Email: mariken.tijhuis@rivm.nl

Generate knowledge: Why?

Public health surveillance is the continuous, systematic collection, analysis and interpretation of health-related data needed for the planning, implementation, and evaluation of public health practice.

Such surveillance can:

- serve as an early warning system for impending public health emergencies;
- document the impact of an intervention, or track progress towards specified goals; and
- monitor and clarify the epidemiology of health problems, to allow priorities to be set and to inform public health policy and strategies.

To address inequalities in health in Europe, our first step must be to address the inequalities in health information.

All too commonly where health is poorest, health information tends to be poorest. Health information is absent or incomplete just where we need it most. Health information is crucial in all countries, rich or poor.

- Sir Michael Marmot

Citation found by WHO

http://www.who.int/topics/public_health_surveillance/en/

ROBERT KOCH INSTITUT



National Institute for Public Health
and the Environment
Ministry of Health, Welfare and Sport



BRIDGEHEALTH

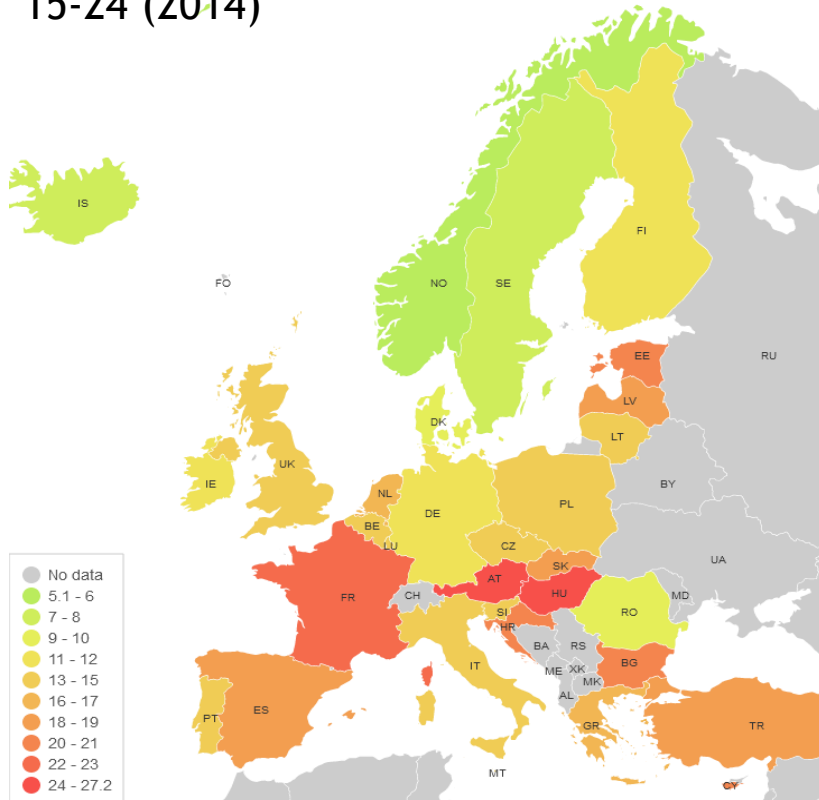
BRidging Information and Data Generation
for Evidence-based Health Policy and Research



This project is funded by
the Health Programme of
the European Union

To illustrate...

Proportion of daily smokers age 15-24 (2014)



Health behavior?

Health policy?

Health in all policies?

Public health ...



Surveillance!

https://ec.europa.eu/health/indicators/indicators_en; accessed 25.10.2017

ROBERT KOCH INSTITUT



National Institute for Public Health and the Environment
Ministry of Health, Welfare and Sport



BRIDGEHEALTH

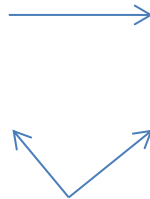
BRIdging Information and Data Generation
for Evidence-based Health Policy and Research



This project is funded by the Health Programme of the European Union

Generate knowledge: How?

Work Package 4 - Focus areas



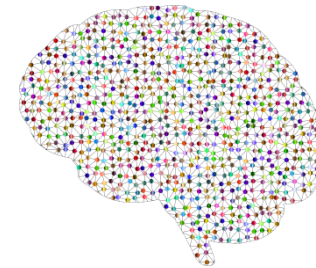
Keep ECHI up-to-date for data availability, methods/scientific developments and policy relevance

Increase relevance, use and visibility of the ECHI



Create wider accessibility for the ECHI and related information through a web-based repository

Establish and maintain expert networks



To illustrate ...

Data availability according to WP4 mapping survey (2016)

44. Regular smokers											
BE	CZ	DE	EE	IE	ES	FR	HR	IT	CY	LV	LT
LU	NL	AT	PL	PT	RO	SK	FI	SE	NO	AL	

The Regular smokers indicator gives the proportion of people reporting to smoke cigarettes daily.

85. Policies on ETS exposure (Environmental Tobacco Smoke)											
BE	CZ	DE	EE	IE	ES	FR	HR	IT	CY	LV	LT
LU	NL	AT	PL	PT	RO	SK	FI	SE	NO	AL	

Definition: The indicator is a composite index summarizing regulations implemented by health (and other) authorities on smoking restrictions in specified (public) domains.

Rationale:

- Which countries have / lack data in the preferred data source and why?

Data availability according to WP4 mapping survey (2016)

Czech Republic	
Proportion of “implemented” indicators available	100%
Proportion of “work-in-progress” indicators available	100%
Proportion of indicators in both sections available	100%

Albania	
Proportion of “implemented” indicators available	49%
Proportion of “work-in-progress” indicators available	20%
Proportion of indicators in both sections available	47%

Rationale:

- Do countries have difficulties in indicator implementation?

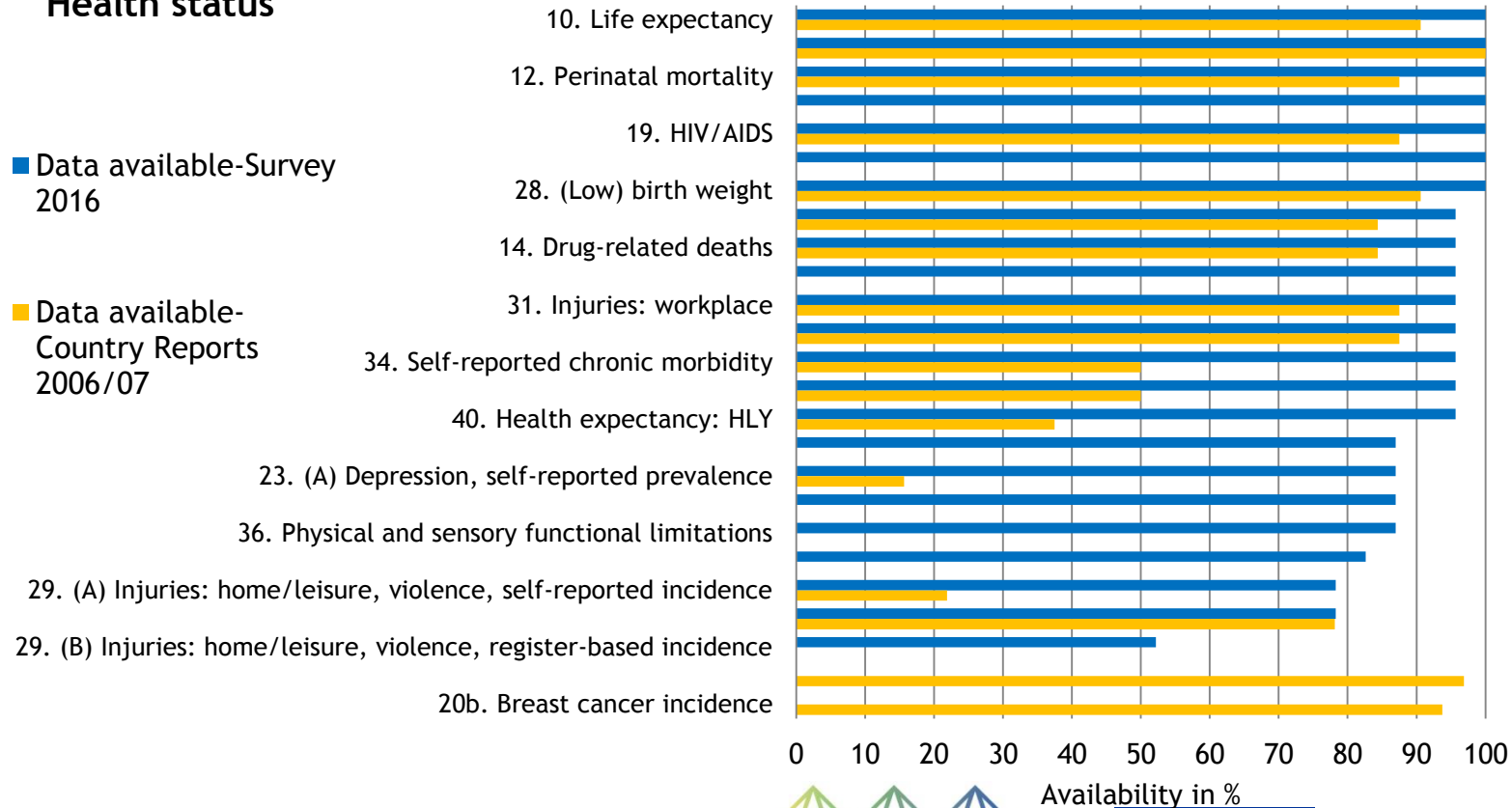


Provide support
Uptake of measures, such as bilateral contacts or national implementation teams, as had been used in previous ECHI projects.

A long way

2006/07: ECHI data available in international data sources
 2016: ECHI data available in preferred international data sources

Health status

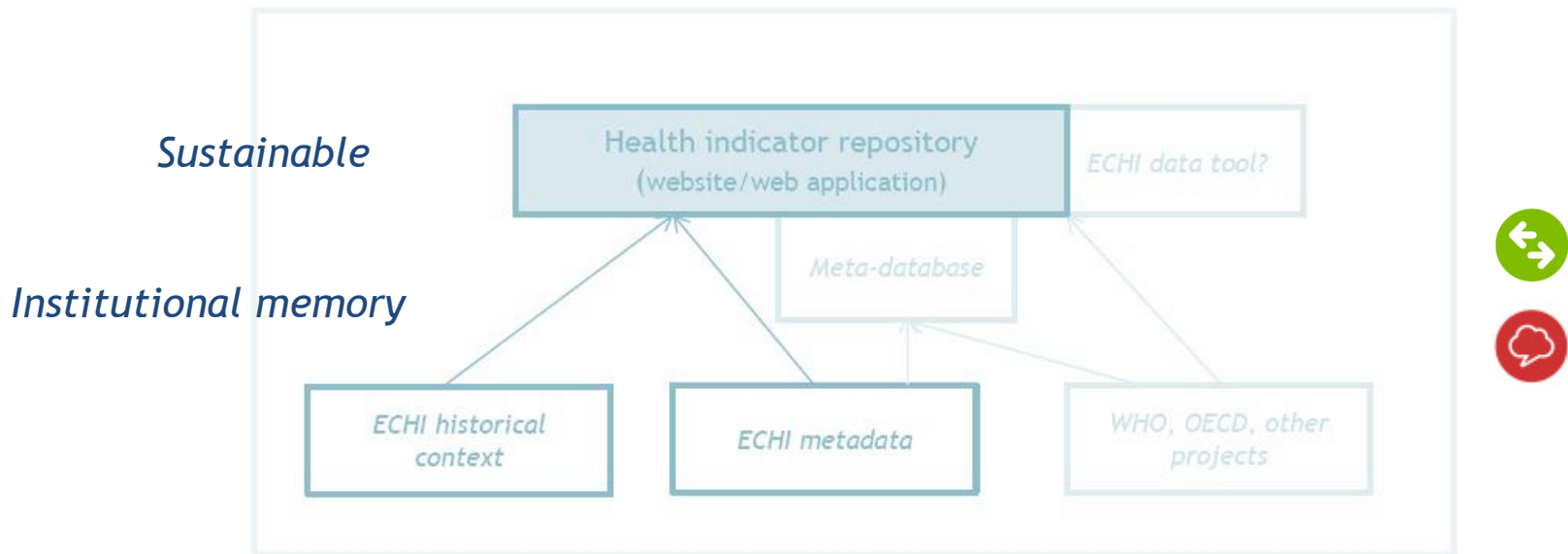


Information repository



Indicator repository (concepts)

Single point of access



Information repository (real-life)

www.volksgezondheidenzorg.info/echi-indicators

-> www.echi.nl

ECHI indicators

Guide Demographic and socio-economic Health status Health determinants Health services Health promotion

All indicators ECHI background

✓ ECHI indicators: The European Core Health Indicators (ECHI)

Reader's guide


ECHI indicators

Guide Demographic and socio-economic Health status Health determinants Health services Health promotion

All indicators ECHI background

Alles uitklappen +

- > What is ECHI?
- > ECHI information repository ←
- > Ideas and suggestions ←



Twitter Facebook LinkedIn

ROBERT KOCH INSTITUT



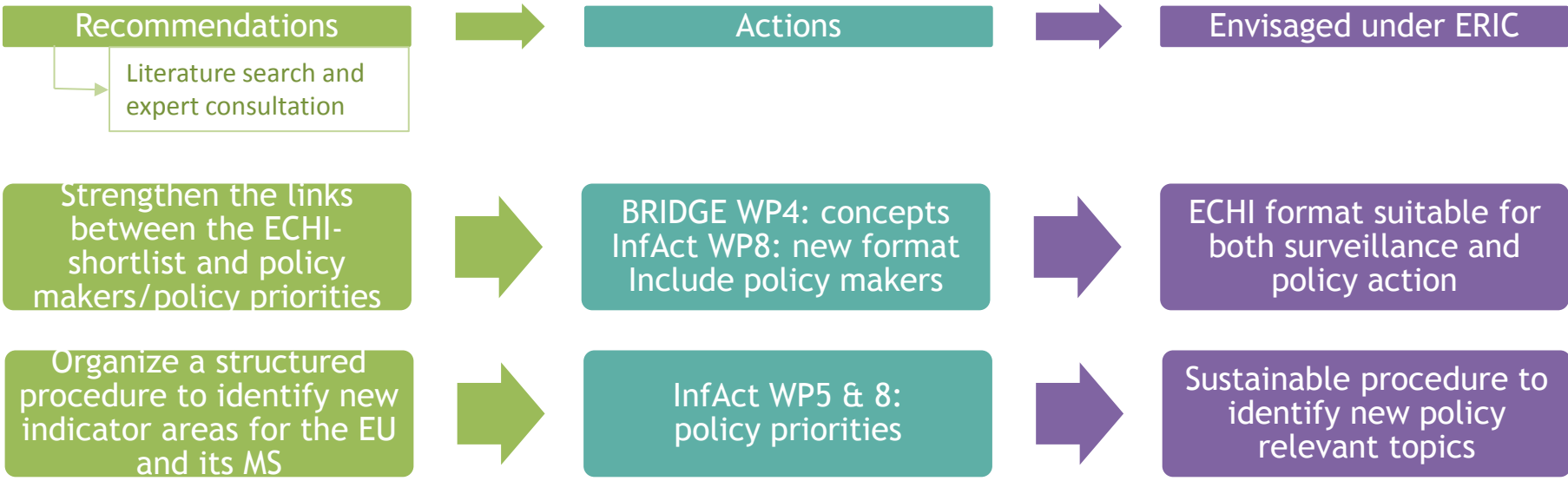
National Institute for Public Health
and the Environment
Ministry of Health, Welfare and Sport


BRIDGEHEALTH
BRIdging Information and Data Generation
for Evidence-based Health Policy and Research



This project is funded by
the Health Programme of
the European Union

Content/policy relevance

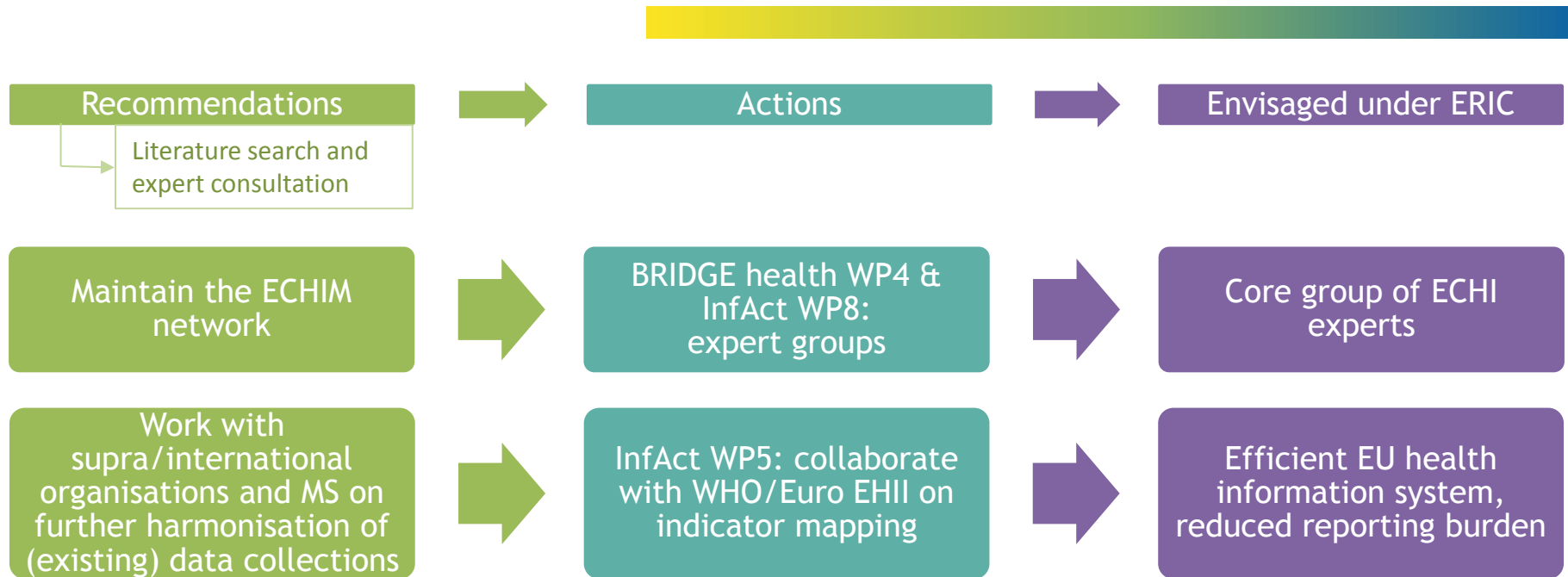


Content/policy relevance (concepts)

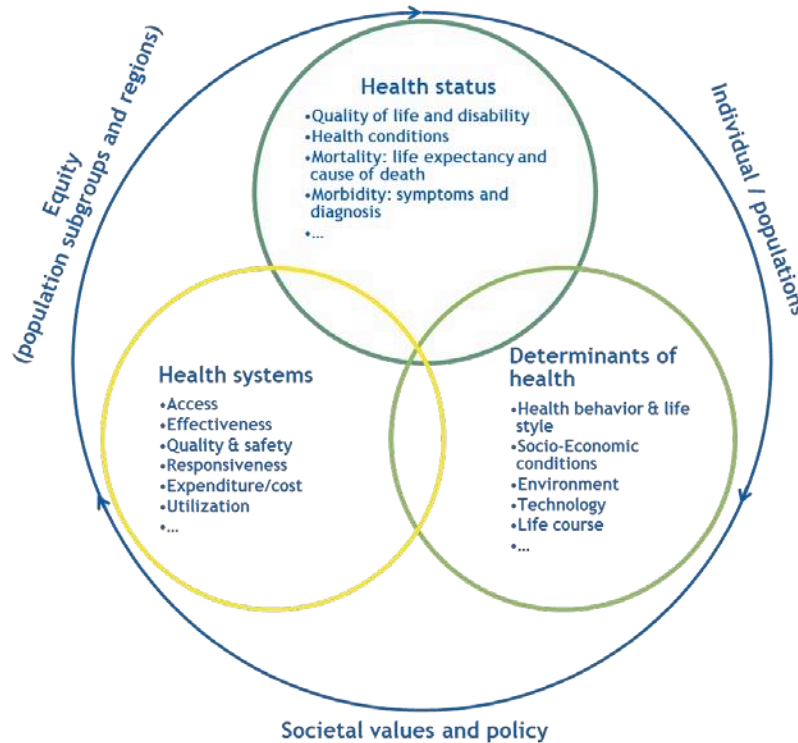
Layering	Application	Policy areas (Main)	Policy areas (Sub)
Headline	Descriptive	Health services and health care	Sustainable health care systems Health system performance, Quality of care, Efficiency of care, Patient safety
Operational	Target	Ageing and population	(Planning of) health care resources and health care cost
Explanatory		Health determinants	Healthy ageing, Ageing population Maternal & perin. Health Child health
Contextual		Diseases and mental health	Health inequalities (including accessibility of care) Preventable health risks and lifestyle health behaviour (including young adults)
		Health in all policies	Non-Communicable diseases (NCD), Chronic Diseases (Preventable) Burden of Disease (BoD) and health threats, communicable diseases Mental health
			Health in All Policies (HIAP) including occupational and environmental health



Collaboration



ECHI: Comparable and policy-relevant health information...



...at the core of health information in the EU